

Honda CRF1000 Africa Twin Manual Trans – Skid Plate Installation Instructions





Installation Instructions – HONDA CRF1000 Africa Twin Manual transmission Skid Plate

Thank you for purchasing a BUMOT skid plate for your motorcycle. BUMOT parts are handcrafted in Bulgaria and are designed for the rider who demands the most durable and functional skid plates for their adventure touring. We're confident you will enjoy your new skid plate for years to come.

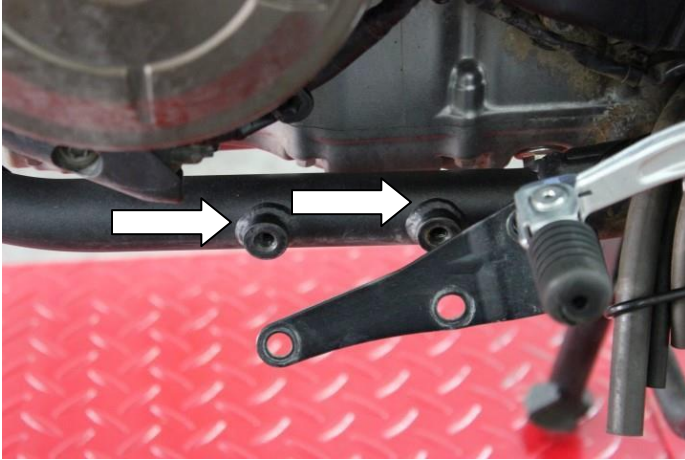
Installation Hardware Contents -

- mf* M8x16 Counter Sunk Bolt – Qty 2
- mf* M8x50 Counter Sunk Bolt – Qty 2
- mf* M8 Finish Washer – Qty 2
- mf* Stainless steel bracket – Qty 1

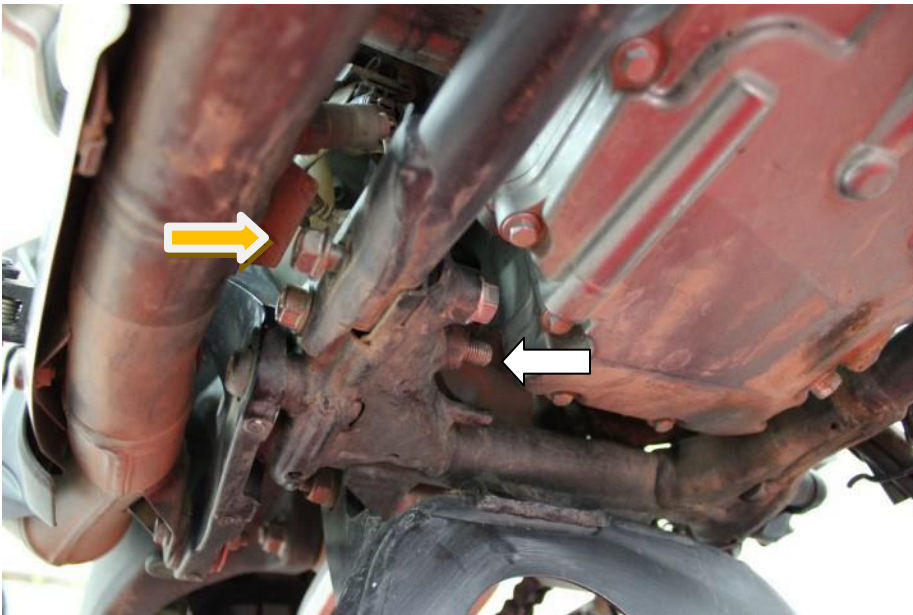
Instructions -

1. Remove the OEM skid plate

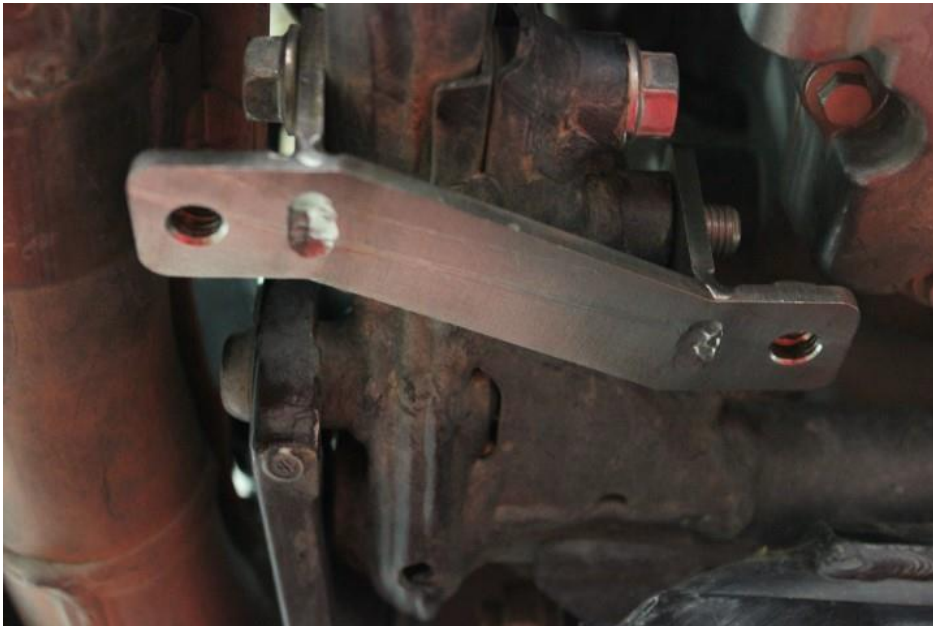
2. Remove the two bolts as shown on the picture below.



3. Remove the nut from the rear bolt (white arrow) and loosen the front nut (yellow arrow)



4. Attach the bracket as shown on the pictures:



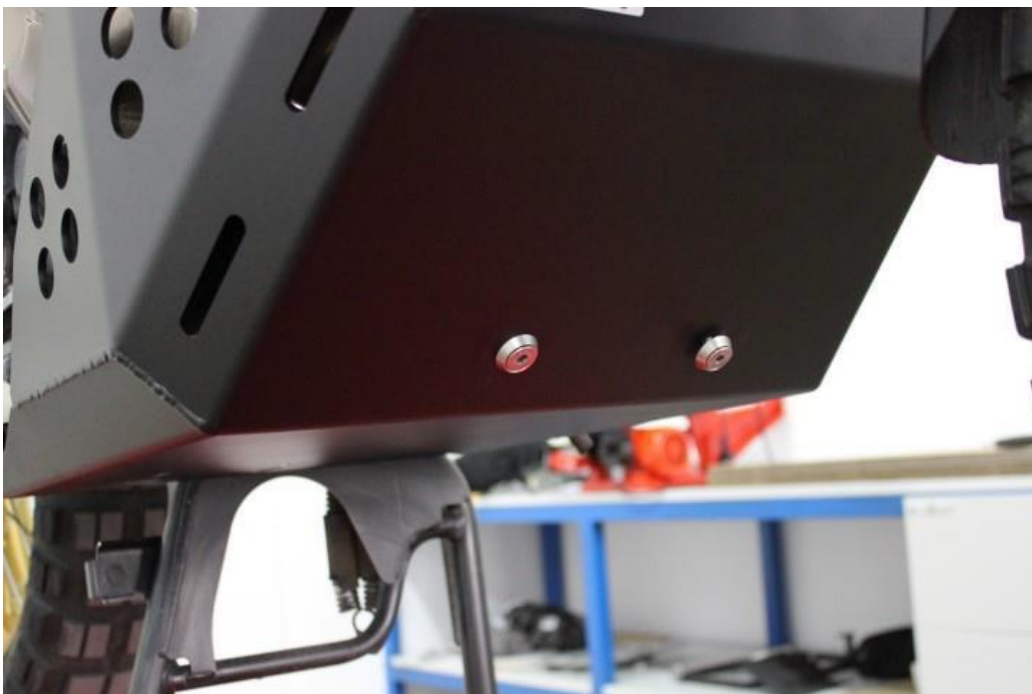
5. Tighten the two bolts.



The bracket has to be in horizontal position as shown on the picture!



6. Use M8x50 Bolts and M8 Finish washers to attach skid plate to the bike. Do not tighten them yet, leave a 1mm gap.



7. Attach the skid plate bracket using two OEM bolts as shown on the picture. Do not tighten them yet!



8. Use M8 x 16 bolts to attach the bottom of skid plate and tighten them.



9. Tighten the front bolts M8x50 and the two OEM ones.

Enjoy!

